

The Jisc logo is located in the top left corner of the slide. It consists of the word "Jisc" in a white, sans-serif font, set against a solid orange rectangular background.

Jisc

The date "November 2015" is positioned in the bottom left corner of the slide. It is written in a white, sans-serif font and is contained within an orange rectangular box that has a slight 3D effect, appearing to be attached to the main orange banner.

November 2015

The main title "Introduction to Research at Risk and Shared Services" is centered on the slide. It is written in a large, bold, white, sans-serif font and is contained within a wide orange horizontal banner that spans most of the width of the slide.

Introduction to Research at Risk and Shared Services

The subtitle "Jisc RDM Shared Service Workshop" is located below the main title. It is written in a smaller, white, sans-serif font and is also contained within the orange banner.

Jisc RDM Shared Service Workshop



Delivering shared services for research data

Research at risk

“ This must be sorted and pulled together. Jisc can offer leadership here. ”

John Shemilt - Director of ICT, Imperial College, RUGIT



Realising a robust and sustainable research data management infrastructure and services to enrich UK research.

Challenge

There is currently an inefficient and fragmented approach to research data management throughout the UK. This leads to underperformance and cost inefficiencies across universities. There is a real risk to universities in failing to comply with government and funder requirements.

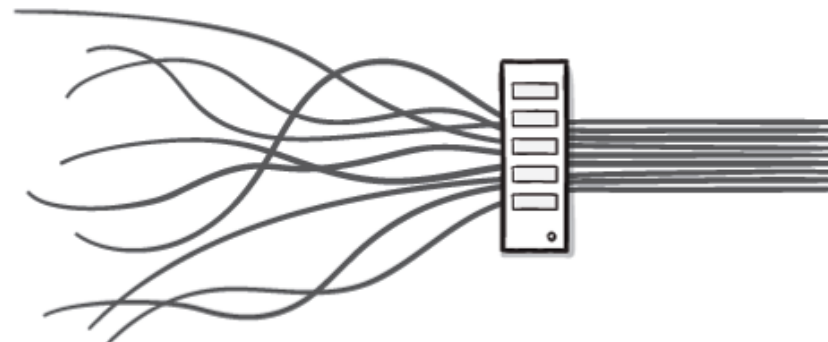


Illustration by Lisa Webb Sharpe

Who it affects

- >> Researchers need to comply with government and funder requirements
- >> IT directors need to store and manage research data
- >> Librarians need to ensure other researchers can access the data

Why it matters

- >> Ability to attract and retain researchers
- >> Reputation of universities can be affected by mismanagement of research data
- >> Support better research collaboration (internationally)
- >> Comply with requirements of research funders

Success criteria

- >> Cost effective national brokered infrastructure as a service
- >> Research outputs discoverable and reusable
- >> Fewer impediments to doing research
- >> Research Data Management is business as usual



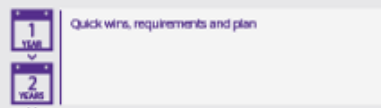
Jisc audience

Which members of Jisc's audience will be most interested?



Timescale

How long until we can expect to see the benefits?



Commitment

Who in the steering group pledged to commit two days of their time?

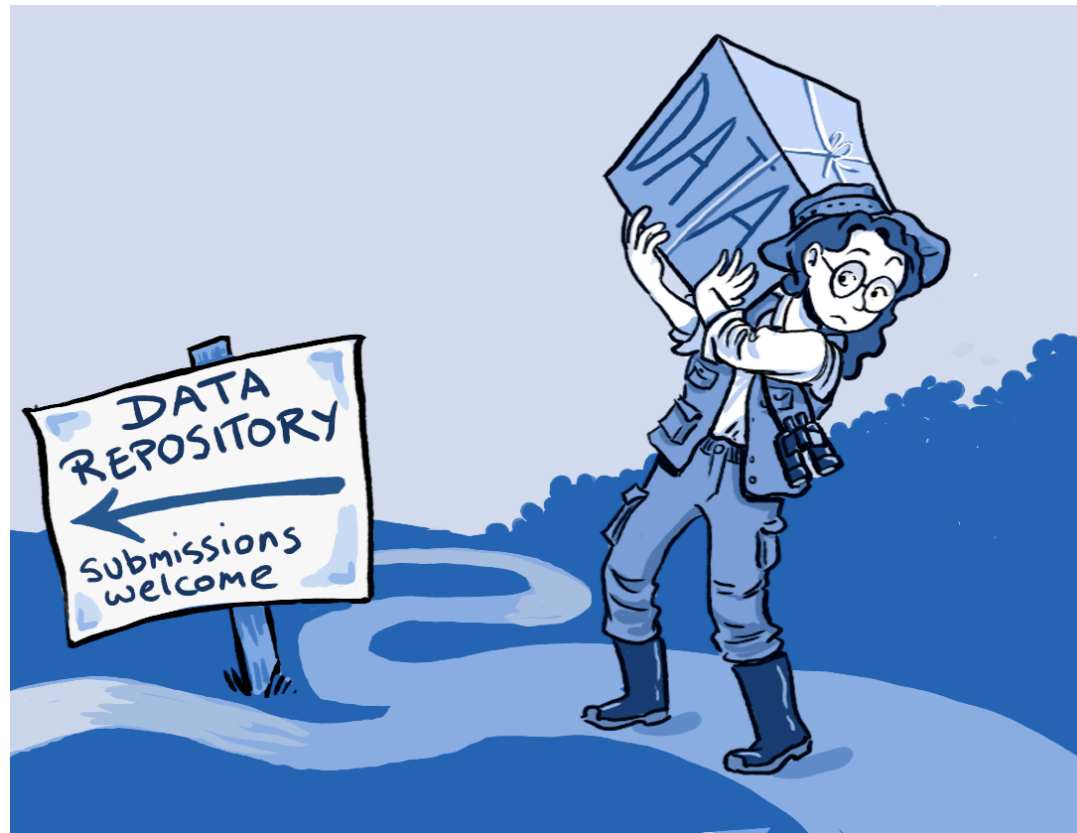


- **EPSRC Mandate - HEI's need established infrastructure and processes to ensure :**
- Retained EPSRC-funded research data is preserved for a minimum of ten years
- Effective data curation is provided throughout full data lifecycle
- Knowledge is provided about their publicly-funded research data holdings
- Discoverability; recording of third party access requests
- Notice and justification of access restrictions, for example 'commercially confidential'
- Awareness and use of relevant law, for example FOI
- Awareness and compliance with research data policies
- Adequate RDM resource allocation for example from quality-related research (QR) funding or research grants
- <https://www.jisc.ac.uk/guides/meeting-the-requirements-of-the-EPSRC-research-data-policy>

<https://pixabay.com/en/chaos-regulation-shield-board-391652/>

Its hard to do so, why look after data?

- Needed to prove research is valid
- Need it to be able to replicate research



https://en.wikipedia.org/wiki/Data_sharing

Opportunities – data curation



https://en.wikipedia.org/wiki/Collections_management_%28museum%29

Opportunities – more innovative research

The launch of 100 floating sensors into the Sacramento River for the Floating Sensor Network project



https://en.wikipedia.org/wiki/Center_for_Information_Technology_Research_in_the_Interest_of_Society



Research at Risk projects

Shared services in active RDM & storage



To determine the need and scope of a shared service, underpinned by a clear RDM architecture. To then procure the development & delivery of a shared service for RDM.

- Blog:** <http://bit.ly/1IMKkn6>
- End Goals:** HEIs can meet funder mandates easily and have a cost effective solution.

Shared services in the preservation & curation gap



To work with institutions to determine the need and scope of shared solutions to meeting research data needs for curation and preservation

- Website:** <http://bit.ly/1IMKkn6>
- End Goals:** Shared service to meet preservation needs so HEIs have trusted long-term access to data.

Research Data Management Shared Service



- Blog:**
- End Goals:** RDM shared service that enables easy implementation of a solution for RDM in UK HEIs

UK Research Data Discovery Service



To develop a shared service to make research data easier to discover and re-use - this aims to be a shared national catalogue of research data

- **Website:** <http://bit.ly/1lseikh>
- **End Goals:** A shared service for research data to enhance re-use and impact of data; possibly part of the RDM shared service

Journal Research Data Policies Registry



To develop best practice on journal policies between publishers & other stakeholders. To make it easy for researchers to know how to follow policies and for journals to create RD policies

- **Website:** <http://bit.ly/1Ks8jhb>
- **End Goals:** A shared service with easy access to journal research data policies and common related standards

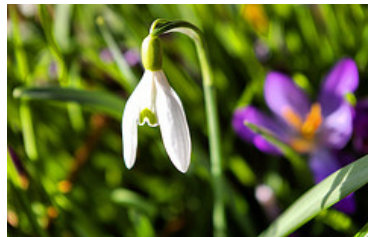
Usage Statistics for Research Data



To increase understanding of metrics & usage for RD, to develop a usage statistics service to enable UK HEIs to count data use, to contribute to incentives for sharing research data & to contribute to determining the point of use

- **Blog:** <http://tinyurl.com/qcxfaao>
- **End Goals:** a shared research data usage statistic service & common related standards

Research Data Spring



To bring together key actors in the research data management arena to develop innovations for improving workflows, interoperability and new shared tools and services

•**Website:** <http://bit.ly/1LCrmEG>

•**End Goals:** A range of interoperability issues improved, shared advice & in some cases tools for all HEIs.

DIRECTIONS FOR RDM in UK Universities



A shared state of play and set of directions in consultation and collaboration with key stakeholders, in particular ARMA, SCONUL, RLUK, RUGIT and UCISA.

- Outputs:** Workshop, <http://bit.ly/1T4XG5l>
Report, <http://bit.ly/1KqoUjl>
- End Goals:** A plan for the way ahead & a baseline for progress

Business Case and Costing for RDM



An agreed set of guidance for the case for RDM and costing information to support the business case in HEIs for research data management.

- End Goals:** Defined value of RDM, business case template and costing tool for HEIs

Guidance on meeting Research Funder requirements



Clear guidance on how to meet funder policies & engagement with Research Data Concordat Group on funder policy harmonisation and implementation.

- Outputs:** Guide on meeting the EPSRC research data policy & case studies <http://bit.ly/1Jtpfko>
- End Goals:** funder policies are easier to meet.



What institutions told us they'd like

What would you like Jisc to Provide?

- “A national data repository”
- “Clarification of issues across requirements of multiple funders that at times seem contradictory...”
- “Working with research funders on data storage requirements, for them to provide suitable discipline specific data storage and preservation...”
- “Currently the UK is running a very inefficient model requiring individual institutions to establish their own repositories. Influencing future central/research council provision would be useful”
- “If not able to provide e.g. data repositories, influence funder or sector/community provision to support the needs of that funder/community.”
- “Data access and user tracking tools and statistics on shared archive services”

Thank you!

Rachel Bruce

Email: rachel.bruce@jisc.ac.uk

Twitter: [@rachelbruce](https://twitter.com/rachelbruce)

Blog: researchdata.jiscinvolve.org/wp/



Except where otherwise noted, this work is licensed under CC-BY-NC-ND